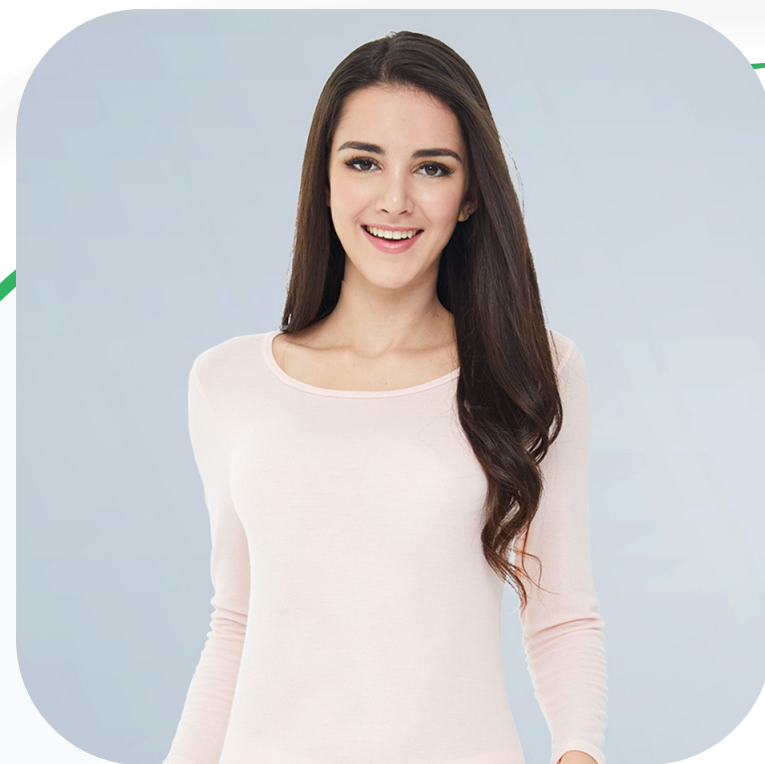


# OCTOBER

## The Perfect 10 Exclusive

01.10.2020 ~ 28.10.2020

Spend a min. amount of  
**RM14,480\*** to redeem  
the following gift items



**UW315 Lady's Long-Sleeve Undershirt**  
- Light Pink, M



**UW316 Men's Long-Sleeve Undershirt**  
- Beige, M



**NS02 Bio Clean Detergent**  
- 500ml



**SG013 Wrist Support (1 Pair/Pk)**  
- Gray, M



**SG014 Ankle Support (1 Pair/Pk)**  
- Gray, L



**LS013 Children's Socks**  
- White, 16cm-18cm

Total gifts worth  
**RM2,165**

**NEFFUL (MALAYSIA) SDN BHD (200601007191)(AJL 931652)**

#### KUALA LUMPUR OFFICE

A UBN Banking Hall, No 1,  
Lorong P.Ramlee, 50250 Kuala Lumpur.

T +03 2031 1177

E customer@nefful.com.my

#### SARAWAK OFFICE

A G & 1st, Sublot 22, Lot 12248, Trinity Hub,  
Jalan Datuk Tawi Sli, 93250, Sarawak.

T +6082 545588

E kuc\_customer@nefful.com.my

#### PENANG OFFICE

A G-13-1, G-13-2, Lorong Bayan Indah 1,  
Bay Avenue, 11900, Penang.

T +604 6384-188

E pen\_customer@nefful.com.my

**NEFFUL**  
INTERNATIONAL

#### Terms & Conditions

- Promotion period is valid from 01.10.2020 ~ 28.10.2020.
- Minimum amount spend stated above refers to member price.
- Purchase of sales kit, sales tools, and top-up on product exchange will not be taken into consideration for sales accumulation in this promotion.
- Amendments on orders or combined orders are not allowed after payment is made.
- This promotion is not valid in conjunction with other ongoing promotion or Nefful Coupons, unless stated otherwise.
- All promotions stated above are not valid in conjunction with other offers in this promotion.
- Product exchange is not allowed for free gift items. Free gift are strictly while stock last. Nefful Malaysia reserves the rights to change or substitute free gift of similar value if the original gift runs out of stock.
- In the event of cancellation of a membership, all gifts given have to be returned.
- Nefful (Malaysia) Sdn Bhd (200601007191)(AJL931652) reserves the rights to change the terms and conditions without prior notice.